

# SOUTHWEST MISSISSIPPI ELECTRIC POWER ASSOCIATION

## METER LOOP SPECIFICATIONS THRU-ROOF (ROOF JACK) SERVICE ENTRANCE

**METER LOOP MUST BE INSTALLED FOR STAKING ENGINEER TO STAKE!**

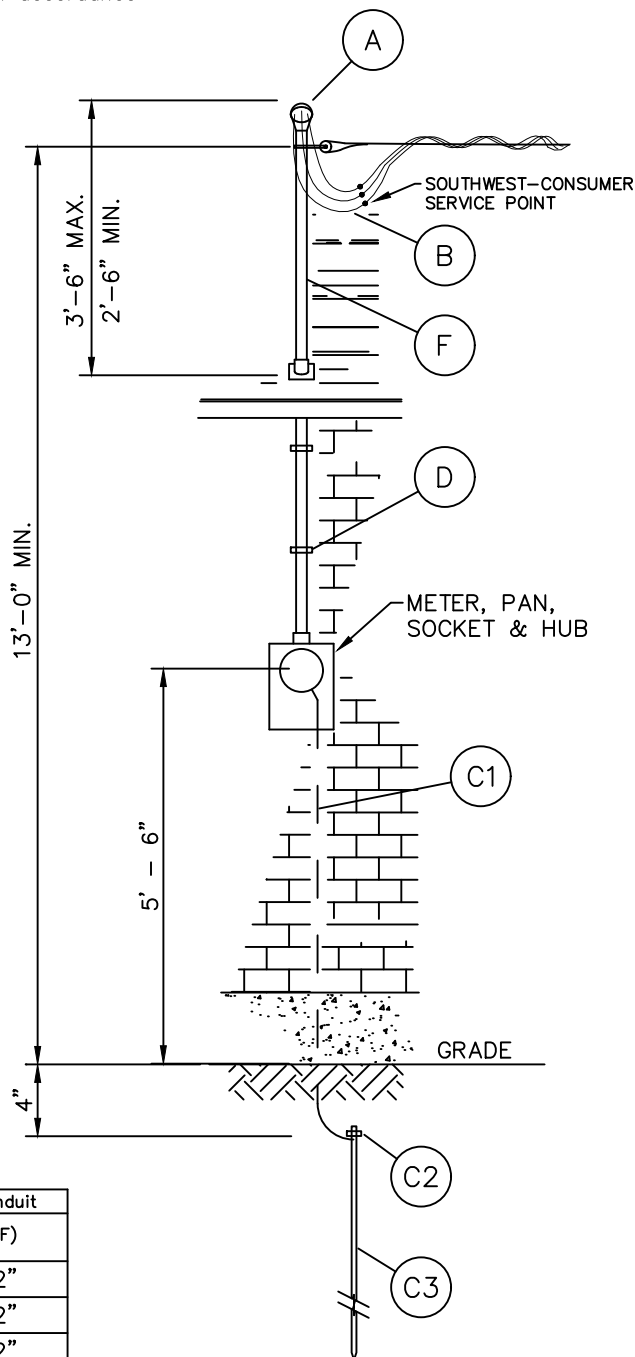
Effective July 1, 2005  
Amended June 21, 2007

**GENERAL REQUIREMENTS:**

1. Consumer is responsible for all equipment beyond the point of service, except the meter.
2. Consumer is responsible for load capacity including future loads.
3. This drawing is illustrative of generally acceptable standards. Where National, Local, City or Community codes are more restrictive, they shall govern. It shall be the responsibility of the member to construct and maintain the electrical service in a safe manner.
4. Use qualified electrician and install the electrical service in accordance with the National Electric Code.
5. Meter pan height shall be 5'-6" above ground.

**Legend:**

- A) Weatherhead.
- B) Service entrance conductors, copper only.
- C1) Grounding conductor, copper only, bare in wall or if exposed in 1/2" conduit securely fastened to wall.
- C2) Ground rod clamps: Acorn type below grade recommended.
- C3) Ground rod 8' long, 1/2" dia. copperweld or 5/8" dia. galv.
- D) Conduit straps: Min. 2, galv.
- E) Not used.
- F) Rigid Galvanized conduit and fittings only. NO PVC OR EMT.



(G) Full Capacity Amperes	(B) Conductor sizes: 30°C ambient, THHN-Copper		Insulation type, THHN-Copper	Ground Wire (C1)	Conduit (F)
	Phase	Neutral			
100	2	2	X	6	2"
150	1/0	1/0	X	4	2"
200	2/0	2/0	X	4	2"

REVISIONS	
1	
2	
3	
4	
5	
6	
7	

**SOUTHWEST MISSISSIPPI EPA**  
MOUNTED METER LOOP SPECS  
THRU ROOF SERVICE ENTRANCE



DRAWN ON: 11-22-21  
DRAWN BY: JB  
APPV BY: DH